

ARAMIS

BEFORE ASSEMBLING MODEL, STUDY SKETCH CAREFULLY.

IMPORTANT—APPLY CEMENT TO INSIDE SURFACES ONLY. AVOID GETTING CEMENT ON OUTER SURFACES OF MODEL SECTIONS. USE CEMENT VERY SPARINGLY AND AVOID GETTING CEMENT ON HANDS, SO AS NOT TO MAR OR SMEAR PLASTIC SURFACES.

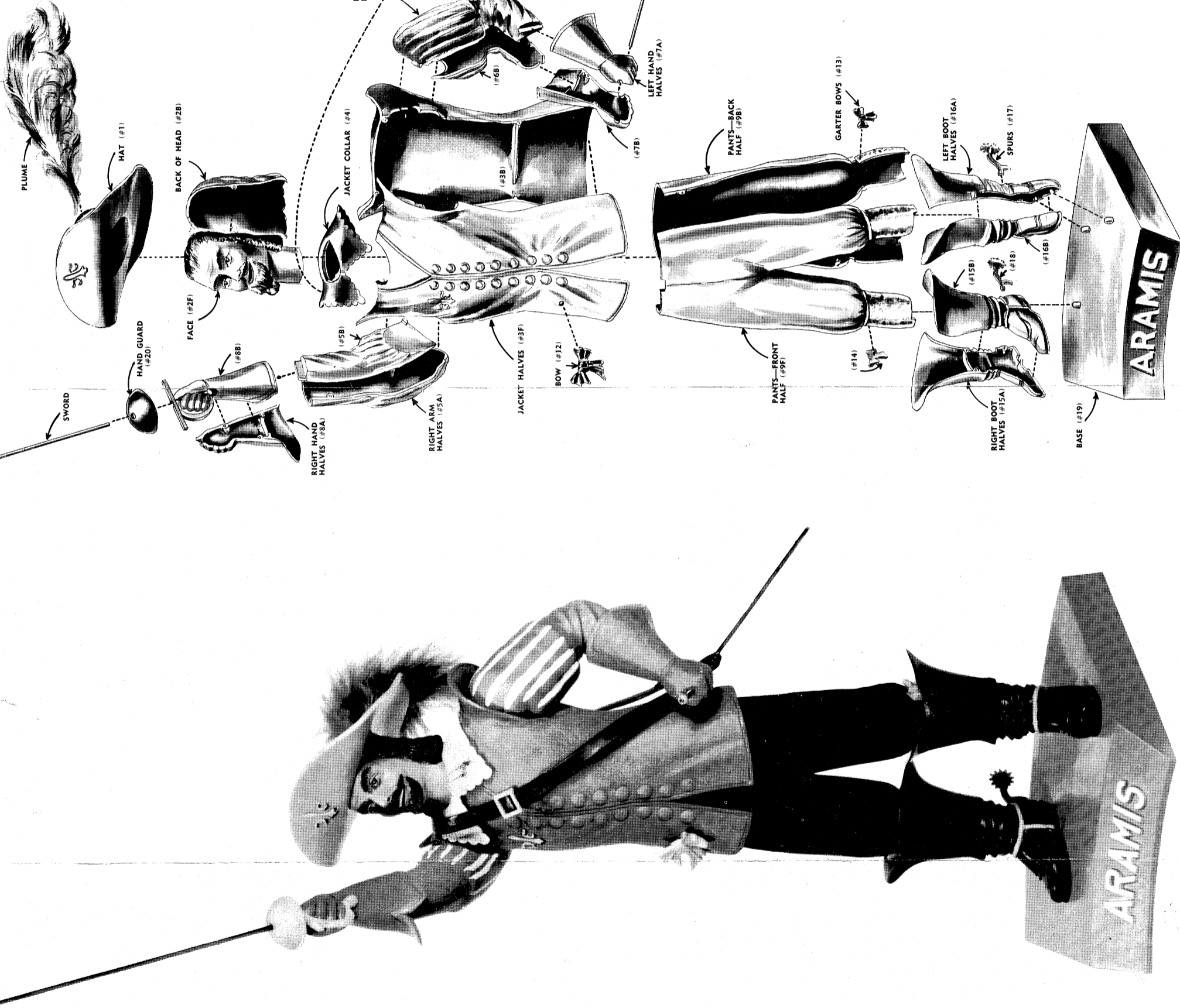
DO NOT HURRY. WORK CAREFULLY AND PATIENTLY.

IMPORTANT NOTE: BEFORE PROCEEDING TO CEMENT PARTS TOGETHER, IT IS ADVISABLE TO FIT PARTS TOGETHER DRY (WITHOUT CEMENT), SO THAT YOU MAY FAMILIARIZE YOURSELF WITH THE PARTS AND HOW THEY GO TOGETHER, ALSO NOTING THE POINTS WHERE CEMENT IS TO BE APPLIED.

FOR BEST RESULTS ASSEMBLE MODEL EXACTLY IN THE ORDER INDICATED.

1. Cement HALVES of LEFT BOOT together (#16A to 16B).
2. Cement HALVES of RIGHT BOOT together (#15A to 15B).
3. Cement FRONT and BACK HALVES of PANTS together (#9F to 9B).
4. Cement GARTER BOWS (#13 and 14) to LEFT and RIGHT LEGS of PANTS.
5. Locate and cement LEFT and RIGHT BOOTS to PANTS LEGS.
6. Cement bottom of BOOTS to pegs on BASE (#19).
7. Cement JACKET HALVES together (#3F to 3B).
8. Locate and cement JACKET to PANTS.
9. Cement JACKET COLLAR (#4) to JACKET.
10. Cement FACE to BACK OF HEAD (#2F to 2B).
11. Cement HEAD to COLLAR.
12. Locate and cement BUCKLE (#11) to SCABBARD STRAP (#10).
13. Pass SCABBARD STRAP over HEAD and onto RIGHT SHOULDER.
14. Cement HALVES of LEFT ARM together (#6A to 6B).
15. Cement HALVES of RIGHT ARM together (#5A to 5B).
16. Cement HALVES of LEFT HAND together (#7A to 7B).
17. Cement HALVES of RIGHT HAND together (#8A to 8B).
18. Locate and cement LEFT and RIGHT HANDS to LEFT and RIGHT ARMS.
19. Locate and cement LEFT and RIGHT ARMS to SHOULDERS of JACKET.
20. Locate and cement BOW (#12) to RIGHT side of JACKET.
21. Locate and cement SPURS (#17 and 18) to BACK of BOOTS.
22. Cement HAT (#1) to HEAD.
23. Insert SWORD (steel wire) through hole in HAND GUARD (#20) then insert in hole in RIGHT HAND and cement GUARD to HAND.
24. Insert SCABBARD (steel wire) through hole in LEFT HAND and through hole in end of SCABBARD STRAP and secure with cement.

25. Cement PLUME to HAT. If it is desired to further decorate the model by painting, the Cover of the Box in which this Model was packed, may be used as a guide both as to color selection and areas to be painted. CAUTION—Use only Aurora's "Speed-Dry" Enamel or those paints which are specified for use on plastics. These paints are available at your local Hobby Shop, Toy Dealer, or Variety Store.

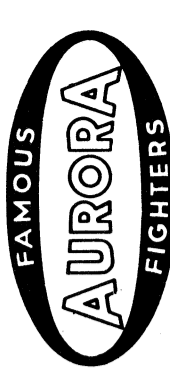


These three were the most swash-buckling heroes of France during the romantic 17th century when politics played such an important role in the rivalry of Kings Louis XIII and XIV and Monseigneur Cardinal, Duc de Richelieu who actually ruled France. The breath-taking adventures of these three inseparables echoed from border to border, and their names became famous. They were, of course, the Three Musketeers, Athos, Porthos and Aramis.

They were members of the King's Regiment of Musketeers, brave soldiers whose lives were dedicated, during the period of our interest, to King Louis XIV. The years following 1625 found our heroes involved in many plots including the saving of the Queen's life. They happened to be the best swordsmen in all France, and skillfully avoided the pitfalls set for them by the diabolically clever Cardinal Richelieu. The Cardinal's guardsmen were forever harassing our Musketeers, for there was much jealousy between the two dominant parties, the King's men and the Cardinal's men.

Their adventures were influenced greatly by a beautiful but extremely evil woman of many identities. This misadventure nearly caused their murders, twice and double should they have been avoided. Athos, her early life, but proved unfaithful to him. The King and the Cardinal were powerful rivals and each tried to have the best swordsmen in their private groups. Over evening games of chess, they would argue the merits of their fine soldiers, each claiming he had the finest. Officially, duels were condemned, but privately both the Cardinal and the King incited their men to quarrel and fight among themselves. The King would be jubilant when his men scored a victory in a brawl with the Cardinal's men and would be on the verge of self-banishment when his men lost. This worked the same with the Cardinal, but he had very few scruples in his competition. The King's Musketeers were a roving bunch, always on the lookout for trouble or a pretty wench. They lounged in the taverns, browsing and singing, and always welcomed the sight of a group of guards of Monseigneur Cardinal for this surely meant a fracas on the spot.

Porthos was the tall, haughty-looking musketeer, the largest of the three. In sharp contrast was Aramis, a young man in his early twenties, handsome with his thin black mustache and gentle black eyes. Athos was also strikingly handsome and remarkably intelligent. Athos was barely thirty years old, but his severity and reserve made him seem the leader. He was never known to breathe the ladies. As quiet as Athos was, Porthos was a chatterbox. Porthos was the opposite in character. Porthos would not speak or act until he had heard his speech out loud. Aramis had aspirations to take Holy Orders and kept a simple, secluded ground-floor abode. When their services as Musketeers had ended about 1633, Porthos married a wealthy lady and retired; Aramis retired to a monastery and Athos claimed to have inherited a small fortune and retired also. Of the three, Athos had the saddest personal life. His former wife, Milady, having caused many deaths due to her traitorous actions, was condemned to death by a group made up partly of the Three Musketeers themselves. This trio of swordsmen were truly the most colorful and unforgettable in history.



Every effort has been made to insure the completeness of this Kit—however, should any part be missing, write directly to:

AURORA PLASTICS CORP.
West Hempstead, L. I., N. Y., Dept. M
(When writing please print your NAME and ADDRESS PLAINLY)

For Cementing, Use AURORA'S POLYSTYRENE CEMENT for plastic model airplanes.

CAUTION

Apply the cement only to those places which are to stick together.



THIS CEMENT MAY BE PURCHASED FROM YOUR DEALER!

ONLY AURORA GIVES YOU ALL THESE SCALE MODEL FEATURES

- Aurora offers the largest collection of truly authentic scale models in the world. You can choose from 17 exciting categories with over 150 different models.
- Aurora's years-ahead engineering insures quick, easy and perfect assembling. Fully illustrated instructions are complete, clear and easy to follow.
- Aurora's super-detail and dramatic realism gives you a model you'll be proud to display. All military kits are scaled from official army, Navy and Air Force plans.
- Aurora's research brings you unusual, hard-to-find models that are truly collector items.
- Aurora gives you more to build . . . more to display . . . more for your money. You'll see for yourself the very first kit you build.

AMOUS FIGHTERS OF WORLD WAR I

French Nieuport
Sopwith Camel SE-5
British Scout SE-5
Germanman Fokker D-3
Fokker DRI Triplane
Fokker D-7
Spad 13
Nieuport 28
Pfalz D-3
DeHaviland DH-4
F2B "Brisfit"
JN-4 "Jenny"
Gothavland DH-10 Bomber
Gotha Bomber

AMOUS FIGHTERS OF WORLD WAR II

B-17 Flying Fortress
Focke Wulf fire
P40 Flying Tiger
ME 109 Messerschmitt
AT-6 "Texan"
SNJ Navy Trainer
Jap Zero
Hellcat
Russian Mig 19
P-51 "Mustang"
P38 Lockheed Lightning

MODERN DAY FIGHTERS

Convair F102 "Dart"
Lockheed F104 "Starfighter"
Douglas F4D "Skyraider"
Grumman F96 "Cougar"
F-94C Starfire
F-100 Super Sabre
B-37 Bomber
B-52 Stratofortress
F9F Panther
Lockheed V10
Colonial Lady
F86D Sabre Jet
F90 Lockheed
Convair V.R.
F8U "Crusader"

GIANT BOMBERS

B8Y "Catalina"
B26 "Martin"
B29 "Superfortress"
B25 "Mitchell" Bomber

WHIRLYBIRDS

Piasecki H-25A "Army Mule"
Kaman HO4 "Egg Beater"
Hiller HO4 "Heli-Jet"
Sikorsky HO4S-55 "Widowmaker"
Piasecki H-21 "Work Horse"

POPULAR PLANES OF THE 1930's

Boeing P-26A
Curtiss P-6E "Helldiver"
Curtiss SBC3 "Helldiver"
M-2 "Mail Plane"
Boeing P1ZE
Boeing F4B

J.S. NAVY WARSHIPS

Destroyer Bennion
Cruiser St. Paul
Atomic Sub. USS Sea Wolf
Destroyer USS Halford
Battleship Iowa
Carrier USS Forrestal
Carrier USS Saratoga

HISTORIC SAILING SHIPS

Pirate Ship Black Falcon
Viking Ship
Chinese Junk
Blue Nose Schooner

AMOUS TANKS

Pattin Tank
Panther Tank
Stalin Tank

MILITARY VEHICLES

U. S. Army 5000 Gallon Gas Truck
U. S. Army Van Semi-Trailer
U. S. Army 40 Ton Flat Bed Trailer with Crawler/Shovel

GUYS AND GALS OF ALL NATIONS

Dutch Boy
Dutch Girl
Mandarin
Chinese Girl
Indian Chief
Indian Squaw
Scotch Lad
Scotch Lassie

FAMOUS WARRIORS

Silver Knight of Augsburg
Blue Knight of Milan
Black Knight of Nurnberg
Red Knight of Vienna
Gold Knight on Horse
U. S. Air Force Pilot
U. S. Sailor
U. S. Army Infantryman
U. S. Marine

COPPERSMITH COLLECTION

King of the Beasts
Bucking Bronco
Chief White Feather
Ballering
Pirate Captain
Madonna
Flower Spray
Elephant
Clown
Liberty Bell
American Flag
Buffalo Hunt
Venetian Gondola
Wild Deer
Sea Life
Colonial Lady
Colonial Man
Haiti Lady
Haiti Man
Mercer Raceabout
Vouquet of Flowers
Venus
Modern Fish
Pinner
Kittens
Flying Geese
Roman Gladiator
Oriental Beauty
Oriental Man
Clipper Ship
Hawaiian Eve
Vase of Roses
Indian Warrior

GIFT PACKAGES

History in Miniature
3 Giant Bombers
2 Famous Fighters
4 Famous Fighters
3 Army Tanks
3 Famous Fighters
2 Knights in Armor
2 American Fighters

TOTEM CRAFT

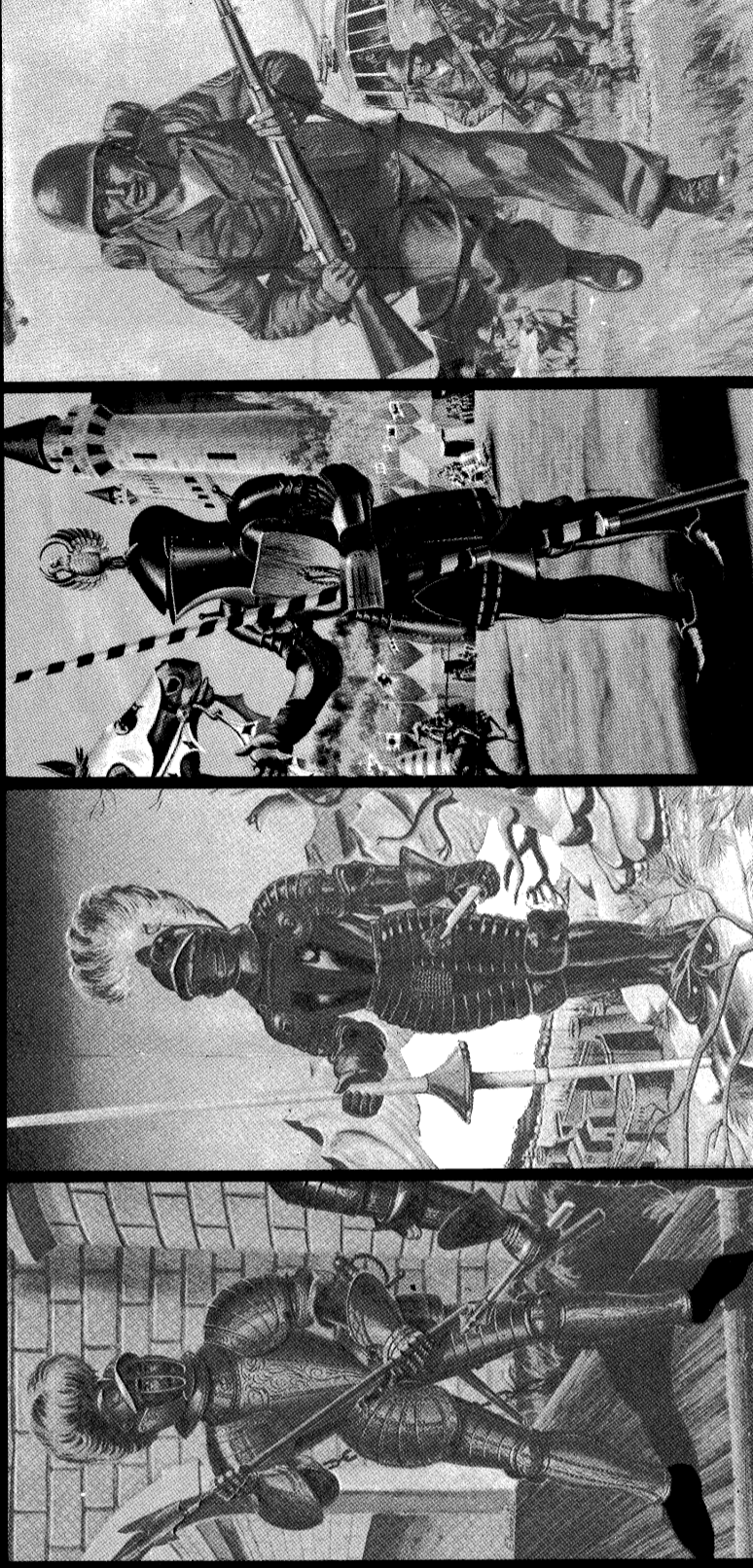
ELECTRONIC MODEL KITS

Crystal Radio Kit
Fixed Crystal Radio Kit
2 Transistor Radio Kit
2 Tube Portable Radio Kit
1 Tube Radio Kit
2 Tube Radio Kit
Twin Signal Set
Single Signal Set
Inter-com Telephone Set
Head Set
Single Head Phone

HO ACCESSORIES

Trees
Colonial House
Bancroft House
R. K. Starion
Church
School House

FAMOUS WARRIORS



KIT NO. K2

BLUE KNIGHT OF MILAN
The Blue Knight of Milan is typical of the decorated armor of the period between 1520 and 1620. The perfect Aurora model is representative of armor which was produced in Northern Italy and which was exported to large quantities to all parts of Europe. This model is a complete with colorful plume. stands 10" high on base with name plate.

KIT NO. K3

BLACK KNIGHT OF NURNBERG
The maneuverability of this knight in armor was obtained by artfully fastening together about 100 pieces of steel so that the wearer could move in any direction at will. When you build the Aurora Black Knight you will see the amazing detail created in both the armor and weapons. Knight has feather plume for headress and comes complete with base and name plate. Height: 11 1/4".

KIT NO. K4

RED KNIGHT OF VIENNA
Every line of this armor worn by the knights of the 15th century was made functional; each surface shaped to deflect blows and protect the wearer. One could almost compare this armor to a modern tank. Armour-making was one of the great arts of this time and the great art of this time was the skill and beauty of these crafts men. The Aurora "Red Knight" stands 10 1/2" high, complete with base and name plate.

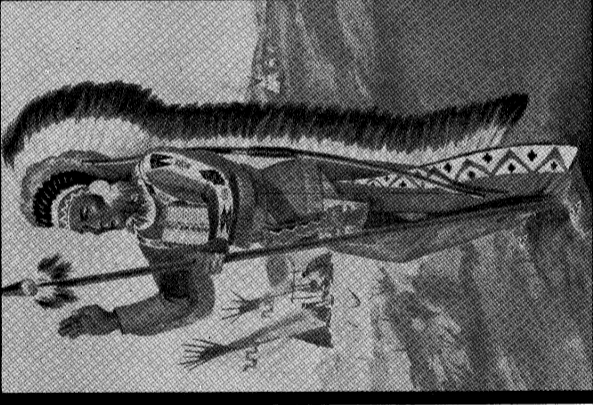
KIT NO. 411

U.S. ARMY INFANTRYMAN
The backbone of the armed forces, Aurora model faithfully details the battle dress of the U. S. fighting man who gets little of the credit but always gets the job done. Figure stands 9 1/2" high and features realism throughout. Complete with base and name plate. You'll enjoy building and displaying the rugged "foot soldier."

KIT NO. 412

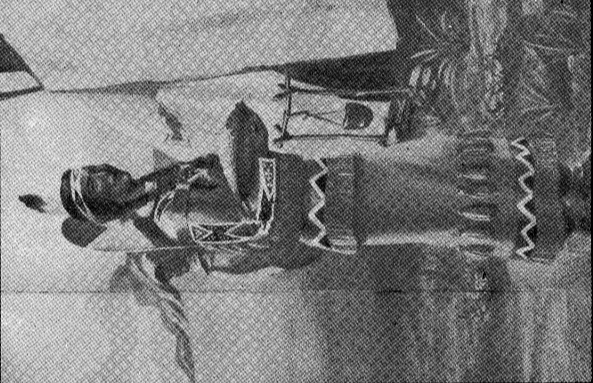
U.S. MARINE
Here's America's pride, a fighting Marine. Considered the finest trained combat man in the world, the Marines have always lived up to their heroic tradition. The Aurora Marine model reproduces a "leather-neck" in famous dress uniform and is a handsome addition to your collection. Figure 9 1/4" high complete with base and name plate.

GUYS AND GALS OF ALL NATIONS



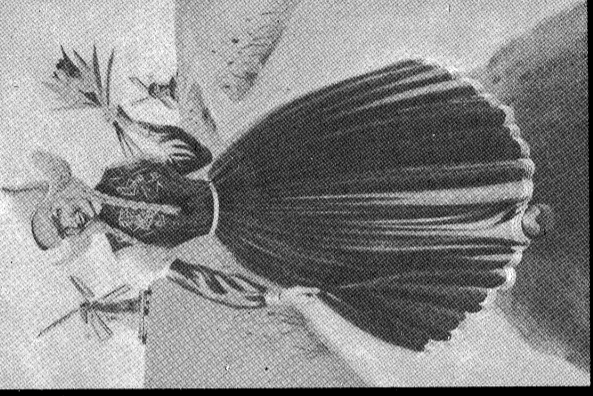
KIT NO. 417

INDIAN CHIEF
From the historic old West comes the Aurora Indian Chief all dressed up in costume and weapons of this tribe. Authentic looking. Chief stands 10" high. Complete with base and name plate.



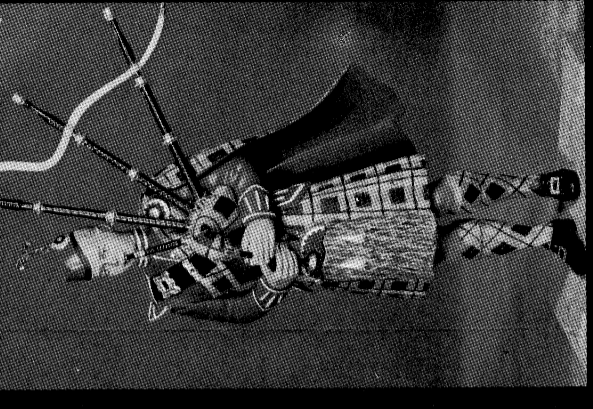
KIT NO. 418

INDIAN SQUAW
The Aurora model of the Indian Squaw is complete right down to the ornamental pieces that she carries on her back. Figure stands 10" high and features base with name plate.



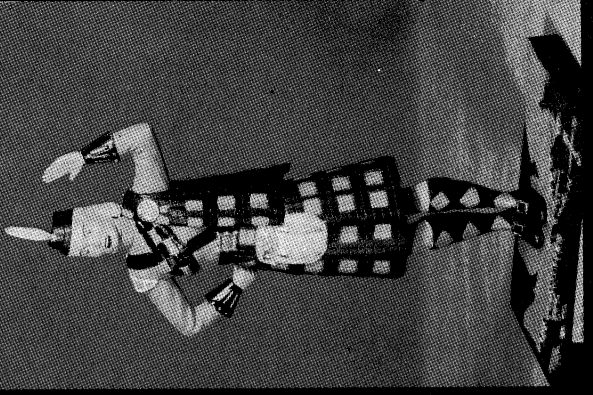
KIT NO. 414

DUTCH GIRL
Match-mate to the Dutch Boy, Aurora's model captures all the charm associated with the lovely girls of Holland. Dutch Girl stands 8 3/4" high and comes complete with base and name plate.



KIT NO. 419

SCOTCH LAD
From the highlands of Scotland comes this perfectly delightful Scotch Lad in the picturesque costume of his country. Figure stands 9 1/2" high and comes complete with base and name plate.



KIT NO. 420

SCOTCH LASSIE
"If a lassie meets a laddie coming through the rye . . . and here's a lassie that will treat your heart as the perfect handmade-piece for the Scotch Lad, she stands 9" high. Complete with base and name plate.