

"The Man from U.N.C.L.E.," a high-style ad venture-suspense series seen weekly by millions of television viewers throughout the United States, has become one of the most spectacular and popular shows produced by Metro-Goldwyn-Mayer Television. U.N.C.L.E., which stands for Unified Network Command for Law and Enforcement, is a mysterious organization dedicated to combating worldwide crime and crime and threats to the safety and well-being of people throughout the world. Its principal enemy is "THRUSH," a ruthless, evil powerful, world-wide group of criminals for hire, who specialize in death and terror. The agents of U.N.C.L.E. fight a relentless battle against "THRUSH's" forces of crime and destruction.

U.N.C.L.E.'s main headquarters is a modern, efficient, technological center of computers and radio equipment used to contact and inform the agents throughout the network. It is disguised behind a row of houses in mid-Manhattan just a few blocks from the United Nations Building. But the scope of U.N.C.L.E.'s work is global. The enforcement agents may find themselves in a THRUSH torture chamber in Red China, battling a religious cult bent on world domination, in India, preventing a deadly fungus from destroying Russia's grain crop, warding off an attack of man-eating cheetahs in Africa, falling captive to a THRUSH brain surgeon in Germany, battling a 350 pound Sumo wrestler in Hong Kong, or seizing a capsule of bacteria that could end the reproductive processes of the human body in Switzerland.

The hero of the television series is Napoleon Solo, portrayed by Robert Vaughn. Solo is the chief enforcement agent in Section II of U.N.C.L.E.'s organization . . . operations and enforcement. The dashing, sophisticated undercover agent is the best in his field, having been thoroughly trained in spy techniques and self-defense, and having gained much experience through his battle against THRUSH. Napoleon Solo presents the picture of a smooth, continental, easy-going, bachelor, spreading his charm whether on or off an assignment. Underneath this cover is an efficient, clever, adventurous, though thorough agent, dedicated to the battle against evil. Napoleon considers all men equal unless they prove otherwise, and in the case of women, that some are more equal than others. His avocation is the pleasure of women and the adventure of his own sloop, using his ski and scuba equipment for the latter, but is naturally lazy. His urbane and worldly character is gained through the extensive travel required by his crime fighting missions. His character can be summed up by saying that Napoleon Solo finds great satisfaction in his job of destroying evil.

Iliya Nickovitch Kuryakin, played by David McCallum, is Napoleon Solo's fellow agent in the battle against crime. Iliya, of Russian origin, has gained fame through his quiet, but extremely clever approach to crime-fighting. He is an intense individualist, a loner, but an experienced and dependable man in a tight spot. His diversions, which relieve the tensions of his dangerous job as U.N.C.L.E. Enforcement Agent, are modern jazz, literature, and women. Unlike Napoleon Solo, he is attracted to the opposite sex, but determined not to let them interfere with his primary job, he seems more at ease holding his specially equipped automatic pistol than holding a woman. Iliya is an expert with explosives, a master of disguises, and holds a black belt in Karate - important traits for the modern agent. His lithe but powerful frame is an asset which aids his proficiency as a cat-burglar and his Russian accent, unique hairstyle, and apparent shyness aid him in dealing with female agents or enemies. Iliya Kuryakin is quietly dedicated to the total destruction of THRUSH.

In the battle against the ruthless forces of THRUSH, Napoleon and Iliya take advantage of the technological development in law enforcement. The unusual automatic pistols equipped with scope and silencer, the fountain pen bombs, the radio wrist watches and cigarette cases, the specially equipped cars, boats and helicopters, the electric screwdriver and flame thrower, a false mustache which sprays knock-out gas when the agent sneezes, the process of microphotography, which can conceal a secret message in the dot of an eye, the development of small electronic "bugs", small microphones hidden in lumps of sugar or olives in a martini, and many other gadget useful to an experienced, undercover agent aid in the intrigue, danger and suspense of modern crime fighting. This special equipment combined with the courage and determined spirits of Enforcement Agents Napoleon Solo and Iliya Kuryakin assist the U.N.C.L.E. forces in their battle against world-wide crime.

Every effort has been made to insure the completeness of this Kit—however, should any part be missing, write directly to:

AURORA PLASTICS CORP.  
West Hempstead, L. I., N. Y., Dept. M  
(When writing please print your NAME and ADDRESS PLAINLY)

Mail this coupon and 10c  
for your New AURORA FULL COLOR  
32 PAGE COLLECTOR'S CATALOGUE  
OF HOBBY KITS

AURORA PLASTICS CORP. DEPT. C  
44 Cherry Valley Rd., W. Hempstead, New York

Please rush me by return mail the new 32 page full-color AURORA HOBBY KIT CATALOGUE. I am enclosing 10c in stamps or coin.

NAME (PLEASE PRINT) .....  
ADDRESS .....  
CITY ..... ZONE .....  
STATE .....

CONTENTS: MERCHANDISE—Postmaster: This parcel may be opened for postal inspection. Return postage guaranteed.  
Cut Along Line

A FEW OF AURORA'S  
SCALE MODEL KITS  
FAMOUS FIGHTERS OF  
WORLD WAR I

- DeHaviland Tiger Moth
- French Nieuport
- British Sopwith
- German SE-5
- German Albatross D-3
- Fokker DR-1 Triplane
- Fokker D-7
- Spad 13
- Nieuport 28
- Pfalz D-3
- DeHaviland DH-4
- F2B "Brisfit"
- JN-4 "Jenny"
- DeHaviland DH-10 Bomber
- Gotha Bomber

FAMOUS FIGHTERS OF  
WORLD WAR II

- P-38 Lockheed Lightning
- P-51 Mustang
- Curtiss P-40
- AT-6 Texan
- SNJ Navy Trainer
- B-17 Flying Fortress
- British Spitfire
- ME-109 Messerschmitt
- Japanese Zero
- Russian Mig-19
- Focke-Wulf

FAMOUS SAILING SHIPS

- Pirate Ship Black Falcon
- Chinese Junk
- Viking Ship
- Blue Nose Schooner
- Culty Sank
- Corisair

FAMOUS ARMY COMBAT UNITS

- German "Panther" Tank
- Russian "Stalin" Tank
- "General Patton" Tank
- U.S. Army 8" Howitzer
- U.S. Army M8 Munitions Carrier
- U.S. Army 155 MM "Long Tom"
- U.S. Army 8" Howitzer with M8 Munitions Carrier

WHIRLYBIRDS

- Pisasecki H-25A "Army Mule"
- Kaon Hok "Egg Beater"
- Hiller Hornet "Rom Jet"
- Sikorsky S-55 "Windmill"
- Pisasecki H-21 "Work Horse"

POPULAR PLANES OF THE 1930'S

- Boeing P-26A
- Boeing P-12E
- Boeing F4B4
- Curtiss "Hawk" P6E
- Curtiss SBC3 "Helldiver"
- M-2 "Mail Plane"

SUPER MODERN JET AIR LINERS

- Pan American Boeing 707
- TWA Boeing 707
- TU104 Russian Jet

RACING SPORT CARS

- The MG
- The Jaguar
- Ferrari 342 "America"
- Ferrari Sportster
- The Cunningham

The Man From U.N.C.L.E. 412

ILLYA KURYAKIN

© 1966 METRO-GOLDWYN-MAYER, INC.

IMPORTANT - READ THIS FIRST!

Before assembling model, study sketch carefully.

Important—Apply cement to inside surfaces only. Avoid getting cement on outer surfaces of model sections. Use cement very sparingly and avoid getting cement on hands, so as not to mar or smear plastic surfaces.

Do not hurry. Work carefully and patiently. Important Note: Before proceeding to cement parts together, it is advisable to fit parts together dry (without cement) so that you may familiarize yourself with the parts and how they go together, also noting the points where cement is to be applied.

For best results assemble model exactly in the order indicated.

This kit is molded of styrene plastic—Use only Aurora's Fireproof Styrene Cement and Aurora's Speed-Dry Enamel. Assure yourself of a perfect model every time!



"THE ENAMEL WITH THE SPRAYED ON LOOK"



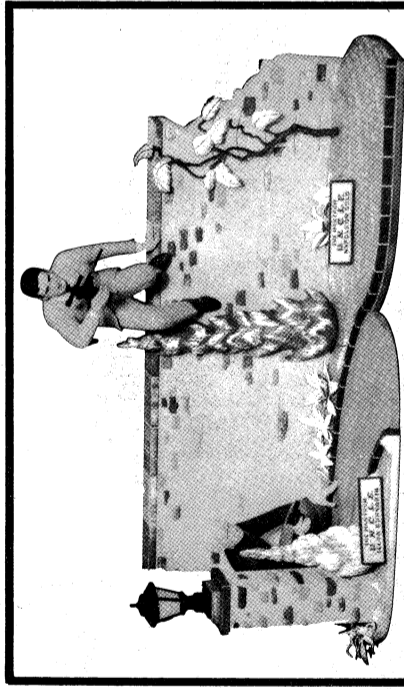
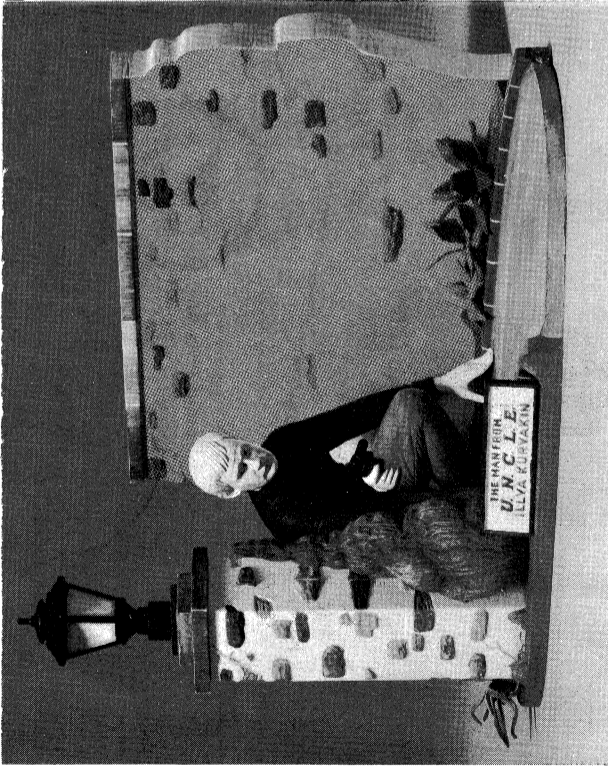
SPEED-DRY ENAMELS are AURORA'S REVOLUTIONARY NEW ENAMEL PAINTS developed after years of research especially for Plastic Models and other products of Wood, Metal, Glass or China.

LITHO. IN U. S. A.

©1966

AURORA PLASTICS CORP.  
West Hempstead, L. I., N. Y.

MADE IN U. S. A.



Packaged separately, Kit No. 412 - ILLYA KURYAKIN and Kit No. 411 - NAPOLEON SOLO can be displayed as a single unit with interlocking pieces.



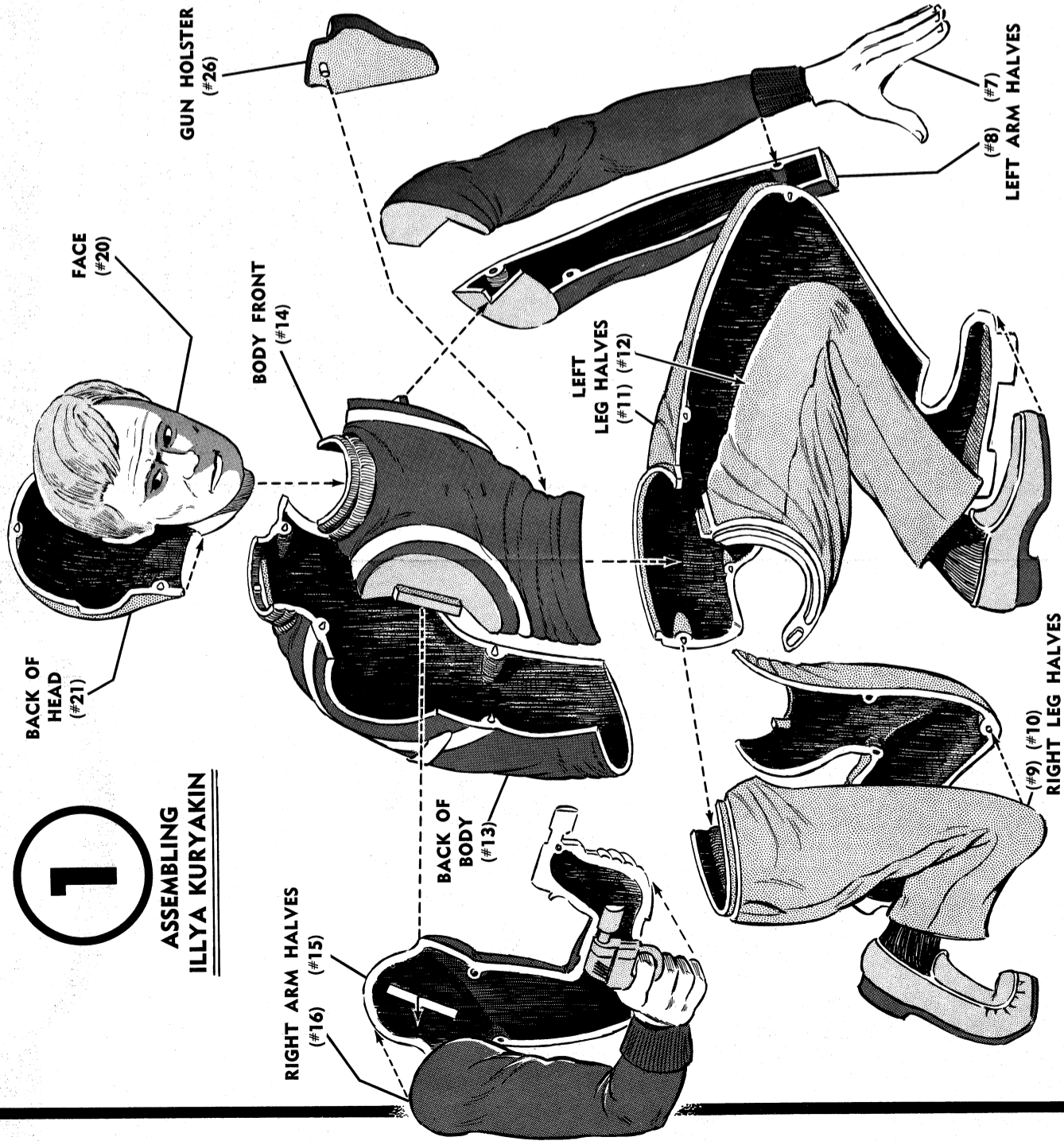
# THE MAN FROM U.N.C.L.E. ILLYA KURYAKIN

FOR SUGGESTED DETAIL PAINTING SCHEME - SEE ILLUSTRATIONS. Paint parts as indicated and allow to dry before assembling.

For best results, use only AURORA'S SPEED-DRY ENAMEL - ONE COAT COVERS - DRIES IN 30 MINUTES - NO BRUSH MARKS.

## 1

### ASSEMBLING ILLYA KURYAKIN

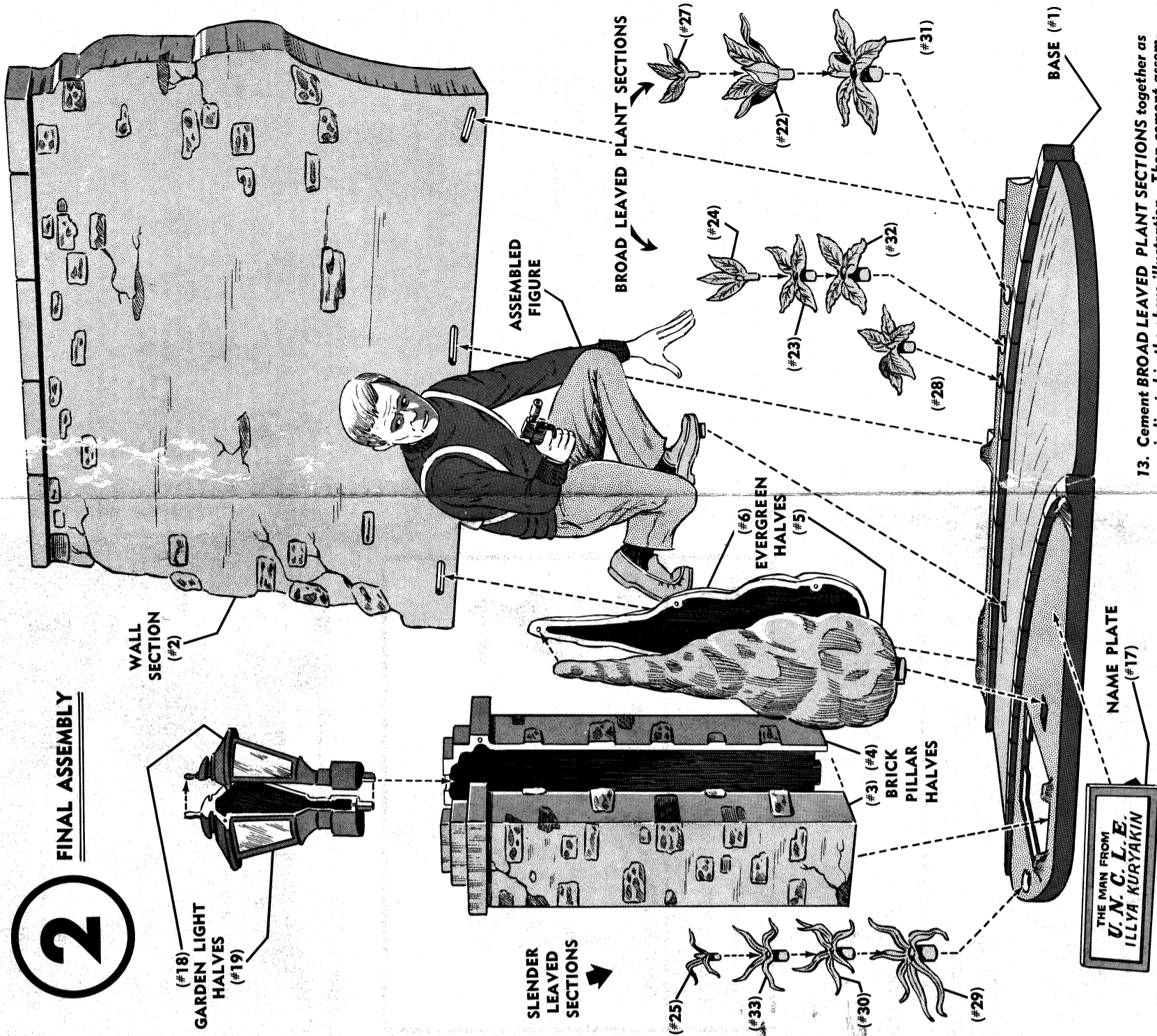


1. Cement FACE (#20) to BACK OF HEAD (#21).
2. Cement BACK OF BODY (#13) to BODY FRONT (#14). Then cement assembled HEAD to BODY.
3. Cement RIGHT ARM HALVES (#15) (#16) together. Then cement assembled RIGHT ARM to BODY.
4. Cement LEFT ARM HALVES (#7) (#8) together. Then cement assembled LEFT ARM to BODY.

5. Cement pin on back of GUN HOLSTER (#26) into hole on left side of BODY.
6. Cement RIGHT LEG HALVES (#9) (#10) together.
7. Cement LEFT LEG HALVES (#11) (#12) together. Then cement assembled LEFT LEG to assembled RIGHT LEG.
8. Cement LEGS ASSEMBLY to BODY. (Then set completely ASSEMBLED FIGURE aside to dry.)

## 2

### FINAL ASSEMBLY



9. Cement BRICK PILLAR HALVES (#3) (#4) together.
10. Cement GARDEN LIGHT HALVES (#18) (#19) together. Cement assembled GARDEN LIGHT to assembled BRICK PILLAR. Then cement BRICK PILLAR to PATHWAY BASE (#1).
11. Cement EVERGREEN HALVES (#5) (#6) together. Then cement assembled EVERGREEN to BASE.
12. Cement SLENDER LEAVED SECTIONS (#25) (#33) (#30) (#29) together. Then cement assembled PLANT to BASE beside PILLAR.

13. Cement BROAD LEAVED PLANT SECTIONS together as indicated in the above illustration. Then cement assembled PLANT to BASE.
14. Cement ASSEMBLED FIGURE to BASE.
15. Cement WALL SECTION (#2) to BASE. (The 3 tabs on the back of BASE fit into slots in WALL.)
16. Cement NAME PLATE (#17) to BASE.
17. Check with BOX WRAP ILLUSTRATION for coloring your model or follow these COLORING SUGGESTIONS: BLOND hair, BLACK sweater, GRAY trousers, TAN wall and pillar, RED bricks, GREEN plants and grass, BLACK garden light.