

# JOHN F. KENNEDY

# AURORA

**IMPORTANT - READ THIS FIRST!**

Before assembling model, study sketch carefully.

**Important**—Apply cement to inside surfaces only. Avoid getting cement on outer surfaces of model sections. Use cement very sparingly and avoid getting cement on hands, so as not to mar or smear plastic surfaces.

Do not hurry. Work carefully and patiently.

**Important Note:** Before proceeding to cement parts together, it is advisable to fit parts together dry (without cement) so that you may familiarize yourself with the parts and how they go together, also noting the points where cement is to be applied.

For best results assemble model exactly in the order indicated.

**This kit is molded of styrene plastic—**

**Use only**

**Aurora's Fireproof Styrene Cement and Aurora's Speed-Dry Enamel. Assure yourself of a perfect model every time!**

MADE IN U. S. A.

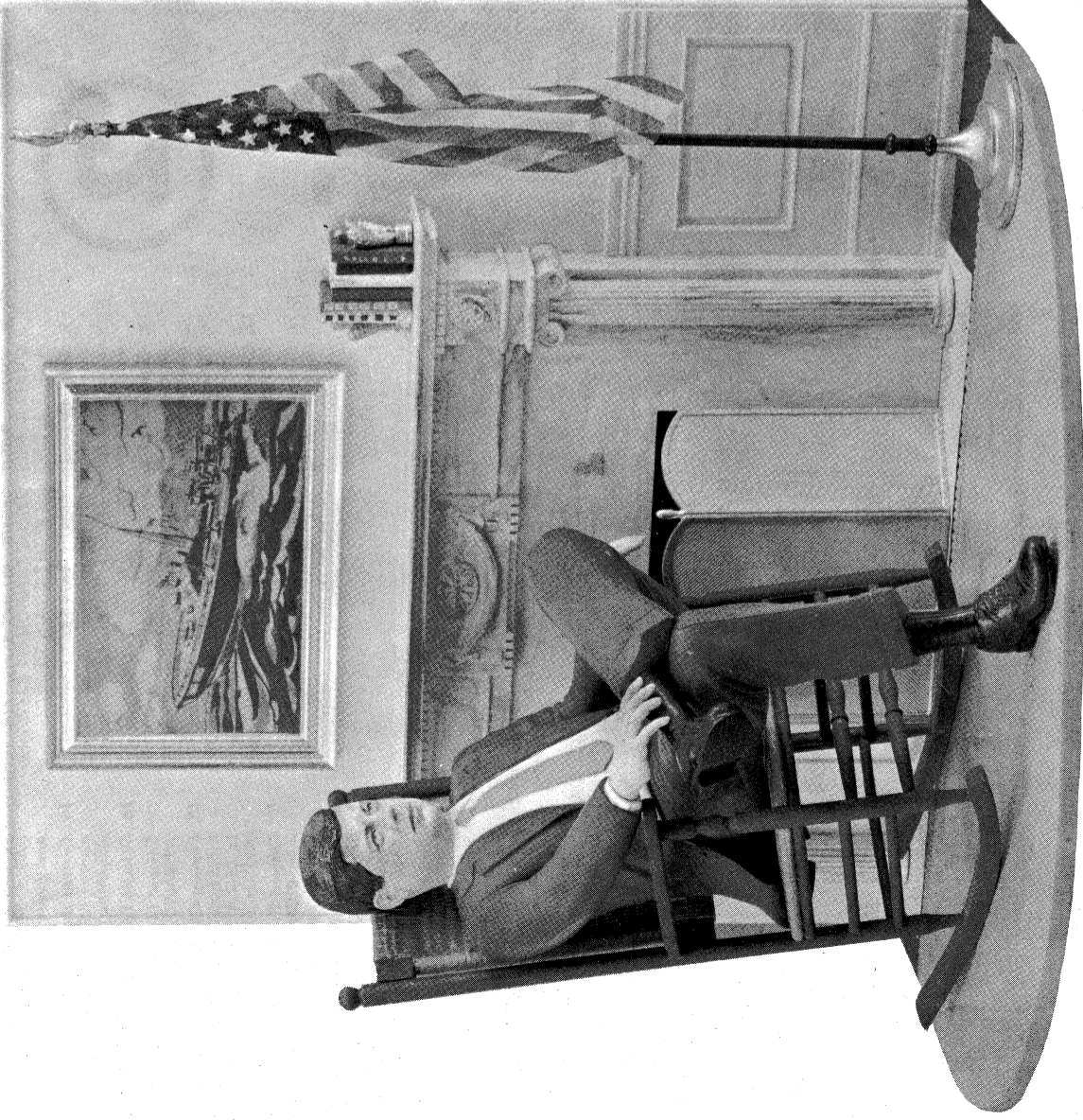


LITHO IN U. S. A.



© 1965

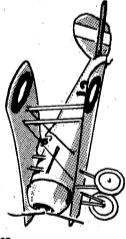
**AURORA PLASTICS CORP.**  
West Hempstead, L. I., N. Y.



## A FEW OF AURORA'S SCALE MODEL KITS

### FAMOUS FIGHTERS OF WORLD WAR I

- DeHavilland Tiger, Moth
- French Nieuport
- Sopwith Camel
- British Scout SE-5
- Ferriman Albatross D-3
- Fokker D-1 Triplane
- Fokker D-7
- Spad 13
- Nieuport 28
- Platy D-3
- DeHavilland DH-4
- F2B "Brisfit"
- JN-4 "Jenny"
- DeHavilland DH-10 Bomber
- Gotha Bomber



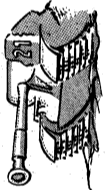
### FAMOUS FIGHTERS OF WORLD WAR II

- P-38 Lockheed Lightning
- P-51 Mustang
- Curtiss P-40
- Hellcat
- AT-6 Texan
- SNJ Navy Trainer
- B-17 Flying Fortress
- British Spitfire
- ME-109 Messerschmitt
- Japanese Zero
- Russian Mig-19
- Focke-Wulf 19



### FAMOUS ARMY COMBAT UNITS

- German "Panther" Tank
- Russian "Stalin" Tank
- "General Patton" Tank
- U.S. Army M8 Howitzer
- U.S. Army M4 Munitions Carrier
- U.S. Army 155 MM "Long Tom"
- U.S. Army 8" Howitzer with M8 Munitions Carrier



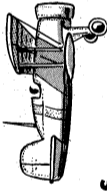
### WHIRLYBIRDS

- Prasecki H-25A "Army Mule"
- Kaman Hok "Egg Beater"
- Filler Hornet "Ram Jet"
- Sikorsky S-55 "Windmill"
- Prasecki H-21 "Work Horse"



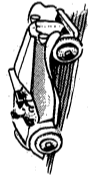
### POPULAR PLANES OF THE 1930's

- Boeing P-26A
- Boeing P-12E
- Boeing F4B
- Curtiss "Hawk" P&E
- Curtiss SBC3 "Helldiver"
- M-2 "Mail Plane"



### RACING SPORT CARS

- The MG
- The Jaguar
- Ferrari 342 "America"
- Ferrari Sportster
- The Cunningham



Every effort has been made to insure the completeness of this Kit—however, should any part be missing, write directly to:

**AURORA PLASTICS CORP.**  
West Hempstead, L. I., N. Y., Dept. M

(When writing please print your NAME and ADDRESS PLAINLY)

Mail this coupon and 10c for your New AURORA FULL COLOR 32 PAGE COLLECTOR'S CATALOGUE OF HOBBY KITS

AURORA PLASTICS CORP. DEPT. C  
44 Cherry Valley Rd., W. Hempstead, New York

Please rush me by return mail the new 32 page full-color AURORA HOBBY KIT CATALOGUE. I am enclosing 10c in stamps or coin.

NAME .....  
(PLEASE PRINT)

ADDRESS .....

CITY ..... ZONE .....

STATE .....

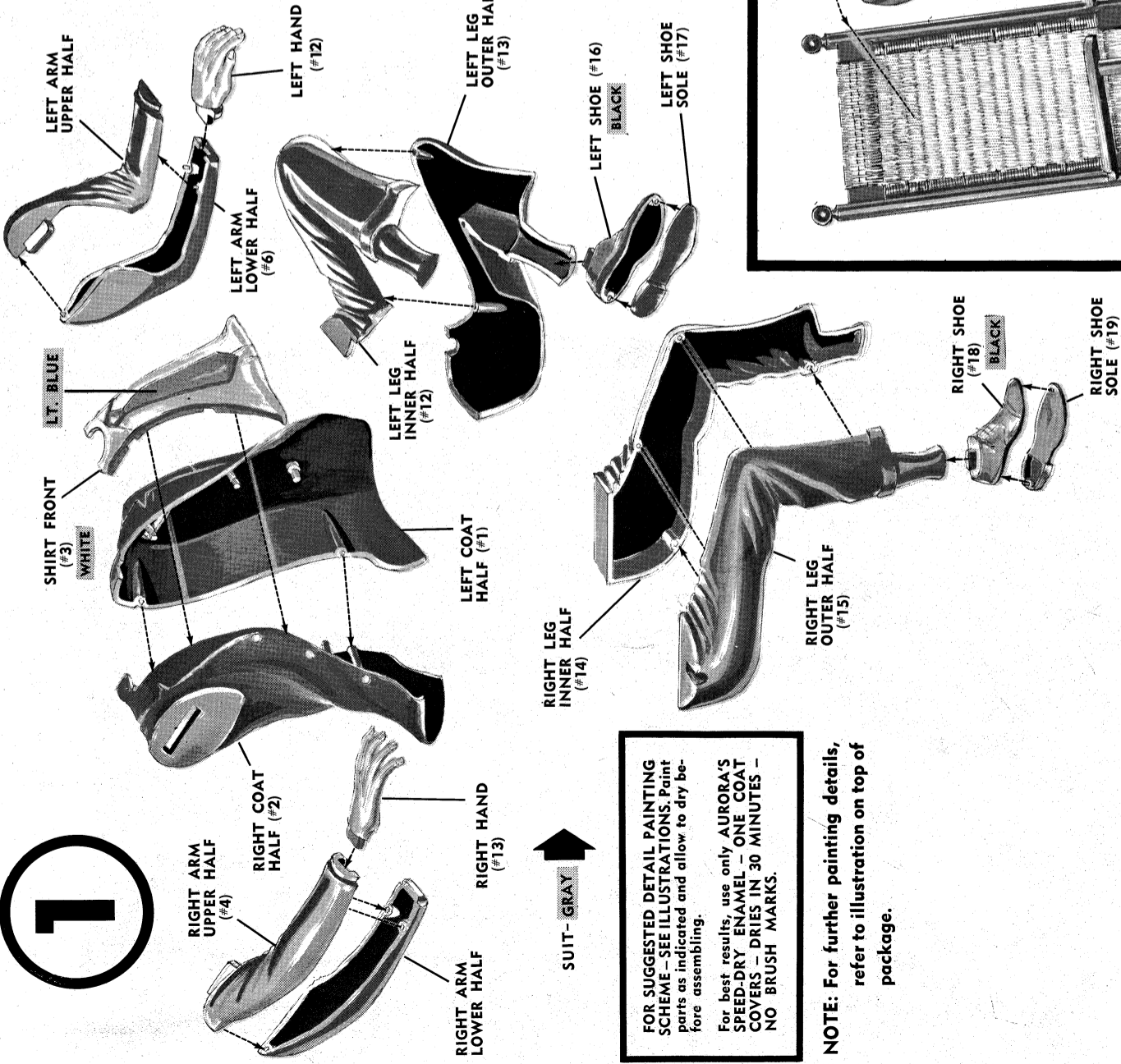
CONTENTS: MERCHANDISE—Postmaster: This parcel may be opened for postal inspection. Return postage guaranteed.

Cut Along Line



# JOHN F. KENNEDY

1



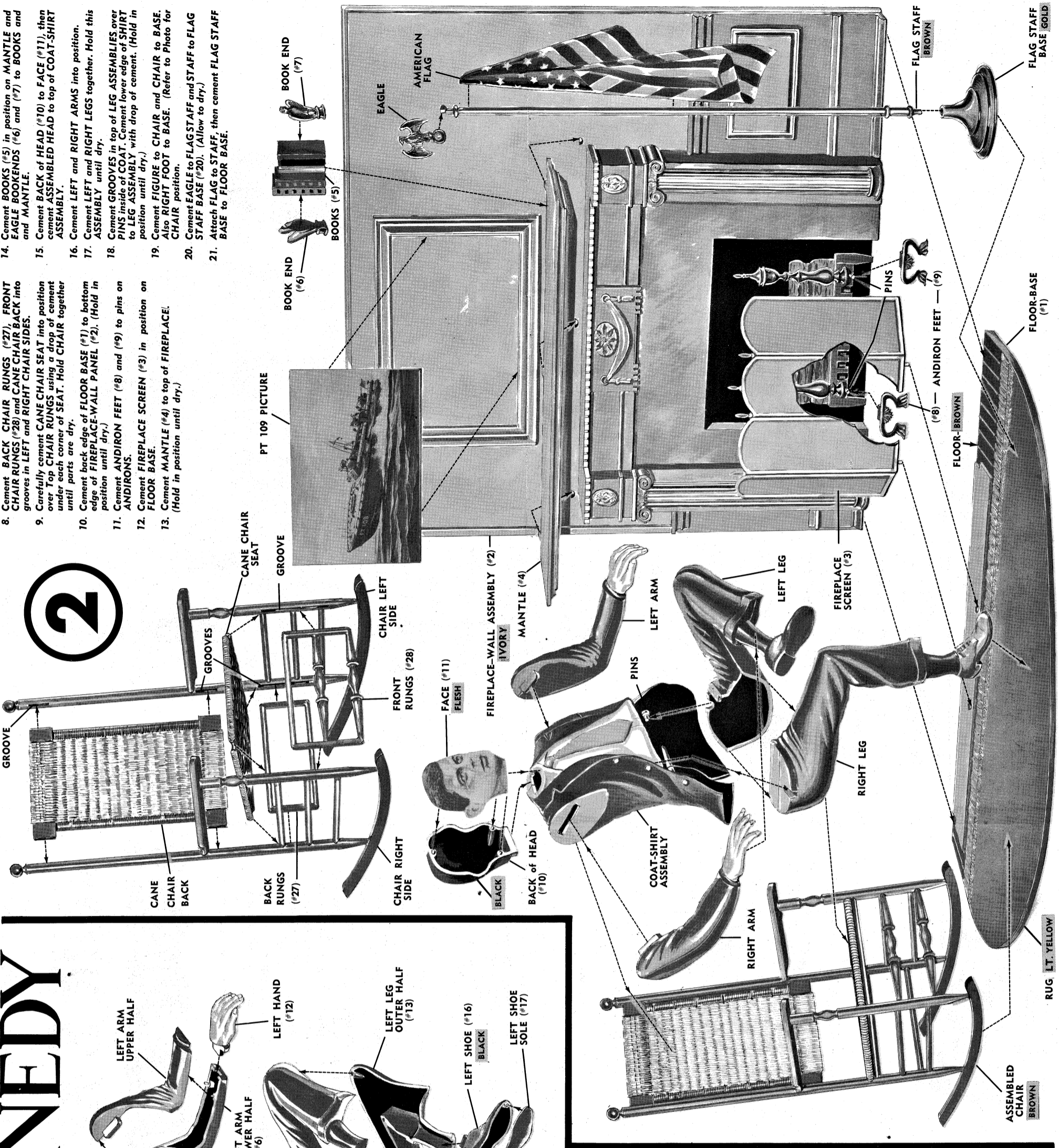
**FOR SUGGESTED DETAIL PAINTING SCHEME - SEE ILLUSTRATIONS.** Paint parts as indicated and allow to dry before assembling.

For best results, use only AURORA'S SPEED-DRY ENAMEL - ONE COAT COVERS - DRIES IN 30 MINUTES - NO BRUSH MARKS.

**NOTE:** For further painting details, refer to illustration on top of package.

1. Cement back edges of LEFT (#1) and RIGHT (#2) COAT HALVES together. Then cement edges of SHIRT FRONT (#3) to inside of edges of COAT HALVES.
2. Cement RIGHT ARM UPPER HALF (#4) to RIGHT ARM LOWER HALF (#5), then cement RIGHT HAND (#13) to RIGHT ARM.
3. Cement LEFT ARM UPPER HALF to LEFT ARM LOWER HALF (#6), then cement LEFT HAND (#12) to LEFT ARM.
4. Cement LEFT LEG INNER HALF (#12) to LEFT LEG OUTER HALF (#13).
5. Cement LEFT SHOE SOLE (#17) to LEFT SHOE (#16), then cement SHOE to LEFT LEG.
6. Cement RIGHT LEG INNER HALF (#14) to RIGHT LEG OUTER HALF (#15).
7. Cement RIGHT SHOE SOLE (#19) to RIGHT SHOE (#18), then cement RIGHT SHOE to RIGHT LEG.

2



8. Cement BACK CHAIR RUNGS (#27), FRONT CHAIR RUNGS (#28) and CANE CHAIR BACK into grooves in LEFT and RIGHT CHAIR SIDES.
9. Carefully cement CANE CHAIR SEAT into position over Top CHAIR RUNGS using a drop of cement under each corner of SEAT. Hold CHAIR together until parts are dry.
10. Cement back edge of FLOOR BASE (#1) to bottom edge of FIREPLACE-WALL PANEL (#2). (Hold in position until dry.)
11. Cement ANDIRON FEET (#8) and (#9) to pins on ANDIRONS.
12. Cement FIREPLACE SCREEN (#3) in position on FLOOR BASE.
13. Cement MANTLE (#4) to top of FIREPLACE. (Hold in position until dry.)
14. Cement BOOKS (#5) in position on MANTLE and EAGLE BOOKENDS (#6) and (#7) to BOOKS and MANTLE.
15. Cement BACK of HEAD (#10) to FACE (#11), then cement ASSEMBLED HEAD to top of COAT-SHIRT ASSEMBLY.
16. Cement LEFT and RIGHT ARMS into position.
17. Cement LEFT and RIGHT LEGS together. Hold this ASSEMBLY until dry.
18. Cement GROOVES in top of LEG ASSEMBLIES over PINS inside of COAT. Cement lower edge of SHIRT to LEG ASSEMBLY with drop of cement. (Hold in position until dry.)
19. Cement FIGURE to CHAIR and CHAIR to BASE. Also cement RIGHT FOOT to BASE. (Refer to Photo for CHAIR position.)
20. Cement EAGLE to FLAG STAFF and STAFF to FLAG STAFF BASE (#20). (Allow to dry.)
21. Attach FLAG to STAFF, then cement FLAG STAFF BASE to FLOOR BASE.