

ROMAN GLADIATOR

AURORA

IMPORTANT - READ THIS FIRST!

Before assembling model, study sketch carefully.

Important—Apply cement to inside surfaces only. Avoid getting cement on outer surfaces of model sections. Use cement very sparingly and avoid getting cement on hands, so as not to mar or smear plastic surfaces.

Do not hurry. Work carefully and patiently. **Important Note:** Before proceeding to cement parts together, it is advisable to fit parts together dry (without cement) so that you may familiarize yourself with the parts and how they go together, also noting the points where cement is to be applied.

For best results assemble model exactly in the order indicated.

This kit is molded of styrene plastic—Use only Aurora's Fireproof Styrene Cement and Aurora's Speed-Dry Enamel. Assure yourself of a perfect model every time!

THE GLADIATORS

Originally starting as innocent circus type exhibitions, the Roman games were held in the Circus Maximus, an area measuring about 1,800 feet long by 450 feet wide. About 200,000 spectators would pay an admission to see a well organized display of trained animal acts, sham battles, acrobatic feats and skilled charioteers racing. As time progressed, the chariot races included over the other acts, because of the inclusion of sporting equipment with the chariot.

About 164 B.C. the games began to become more savage; slaves were pitted against each other to fight to the death. These contests replaced the more peaceful exhibitions and the amounts of the slaves were increased until as many as 100 pairs were battling each other by 145 B. C. These contests were usually sponsored by politicians who were seeking favor in the eyes of the voters, and each politician would try to outdo the other in the size of the battles. Promoters seized quick on able bodied slaves and sent only to the politicians. Criminals and prisoners of war were pressed into service and together with the slaves were trained for combat. These professional fighters became known as 'gladiators' which means 'swordsmen'.

When Julius Caesar came into power about 46 B.C., he wanted to gain the support of his conquered hordes and decided to increase the size and scope of the games. This led to some of the really big contests involving thousands of men and animals fighting to the death. Included were animals from all points, rhinos, bears, elephants, apes, tigers, hyenas, wild dogs, pythons, polar bears, lions and wild bears. No expense was spared for these spectacles and the treasures of the empire were used to buy slaves and sand for the arena were shipped from foreign lands. The immense populace of Rome had little to eat. To keep them quiet and quell any thoughts of mutiny, the contests were made more barbaric and cruel. During one of the contests near the end of B.C. time, the spectators became so excited they set fire to the wooden stands and practically destroyed the Circus Maximus. As a result, a new Coliseum was built, which was without compare. Built 80 A.D. this impressive stadium measured 564 feet by 518 feet with walls rising 144 feet. The arena could be flooded to provide thrilling sea battles between men and demizens of the deep. The annual ceremonies lasted 100 days from sunrise to sunset and more than 15,000 men and animals died in the contests.

Every effort has been made to insure the completeness of this kit—however, should any part be missing, write directly to:

AURORA PLASTICS CORP.
West Hempstead, L. I., N. Y., Dept. M

(When writing please print your NAME and ADDRESS PLAINLY)

THIS KIT IS MOLDED OF STYRENE PLASTIC

Use Only . . .

AURORA'S
FIREPROOF
STYRENE PLASTIC
CEMENT

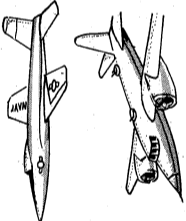


TUBE 10c

BOTTLE WITH BRUSH 25c

WORLD'S FIRST MANNED SPACE SHIP

X-15 Sateloid Rocket Plane



GIANT BOMBERS

B-26 Martin "Marauder"
B-29 Superfortress
B-25 Mitchell Bomber
PB7 "Catalina"
B-58 Hustler
Russian Nuclear Bomber

FAMOUS WARSHIPS

Pocket Battleship Graf Spee
Battleship U.S.S. Iowa
Destroyer U.S.S. Halford
Carrier U.S.S. Saratoga
Destroyer U.S.S. Bannion
Cruiser U.S.S. St. Paul
Carrier U.S.S. Forrestal
Submarine U.S.S. Sea Wolf
Atomic Submarine S.S.N. Nautilus
"Q" Ship—Atlantis—German Raider

FAMOUS SAILING SHIPS

Pirate Ship Black Falcon
Chinese Junk
Blue Hope Schooner
Curry Sloop
Corsair

FAMOUS ARMY COMBAT UNITS

German "Panther" Tank
Russian "Stalin" Tank
"General Patton" Tank
U.S. Army 8" Howitzer
U.S. Army M8 Munitions Carrier
U.S. Army 155 MM "Long Tom"
U.S. Army 8" Howitzer with M8 Munitions Carrier

WHIRLYBIRDS

Piazecki H-25A "Army Mule"
Kaman Hok "Egg Beater"
Hiller Hornet "Ram Jet"
Sikorski S-55 "Windmill"
Piazecki H-21 "Work Horse"

POPULAR PLANES OF THE 1930's

Boeing P-24
Boeing P-26
Boeing F4E
Boeing "Hawk" P6E
Curtiss SR3 "Helldiver"
M-2 "Mail Plane"

SUPER MODERN JET AIR LINERS

Pan American Boeing 707
TWA Boeing 707
TU104 Russian Jet

RACING SPORT CARS

The MG
The Jaguar
Ferrari Sportster
The Cunningham

A FEW OF AURORA'S SCALE MODEL KITS

FAMOUS FIGHTERS OF WORLD WAR I

DeHaviland Tiger Moth
French Nieuport
Sopwith Camel
British Scout SE-5
German Albatross D-3
Fokker Dk-1 Triplane
Fokker D-7
Spad 13
Pleopropo 28
DH-2 DH-4
DH-3
F8B "Bartel"
JN-4 "Jenny"
DeHaviland DH-10 Bomber
Gotha Bomber

FAMOUS FIGHTERS OF WORLD WAR II

P-38 Lockheed Lightning
P-51 Mustang
Curtiss P-4C
Hellcat
AT-6 Texan
SNJ Navy Trainer
B-17 Flying Fortress
British Spitfire
ME-109 Messerschmitt
Japanese Zero
Focke-Wulf

Mail this coupon and 10c for your New AURORA FULL COLOR 32 PAGE COLLECTOR'S CATALOGUE OF HOBBY KITS

AURORA PLASTICS CORP. DEPT. C

44 Cherry Valley Rd., W. Hempstead, New York

Please rush me by return mail the new 32 page full-color AURORA HOBBY KIT CATALOGUE. I am enclosing 10c in stamps or coin.

NAME (PLEASE PRINT)

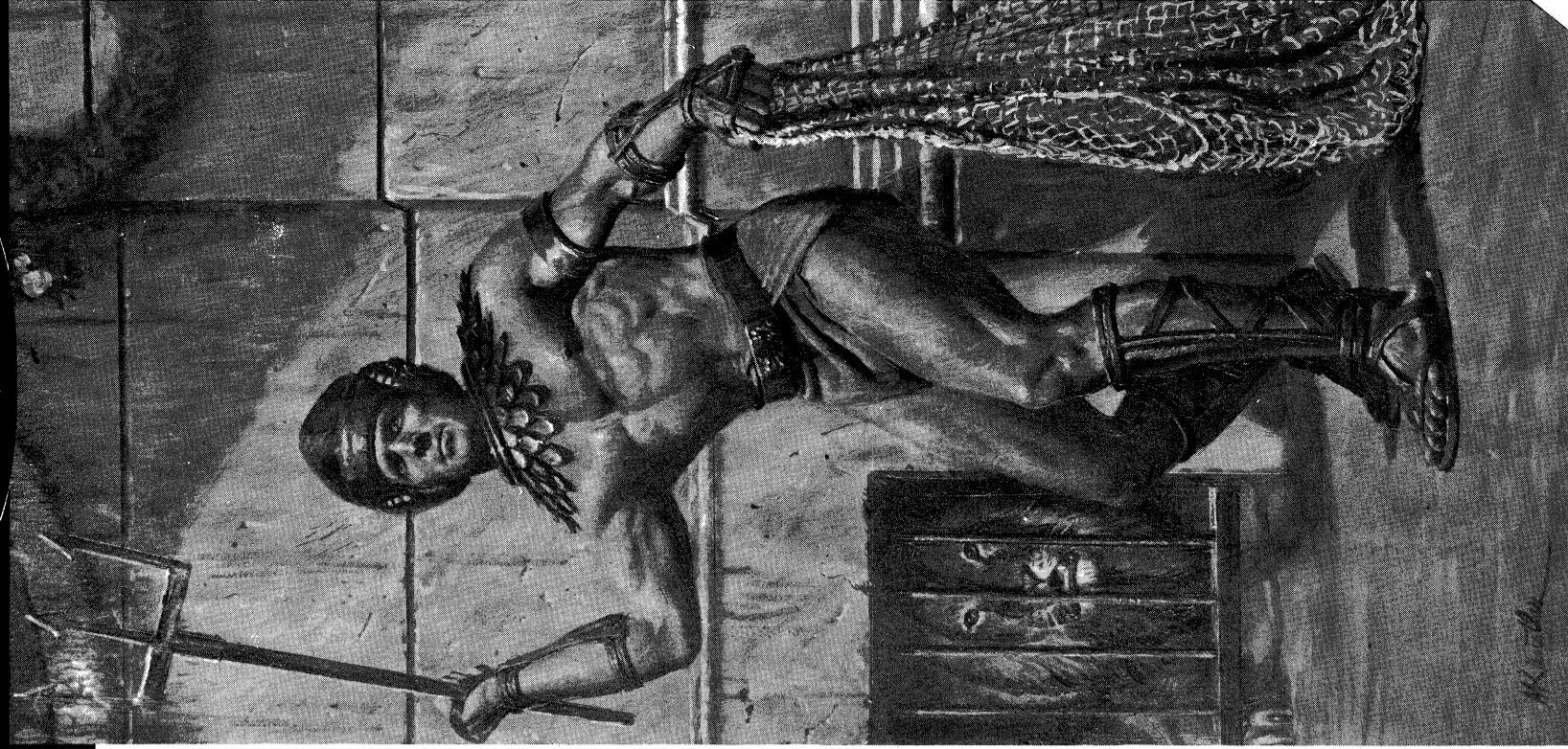
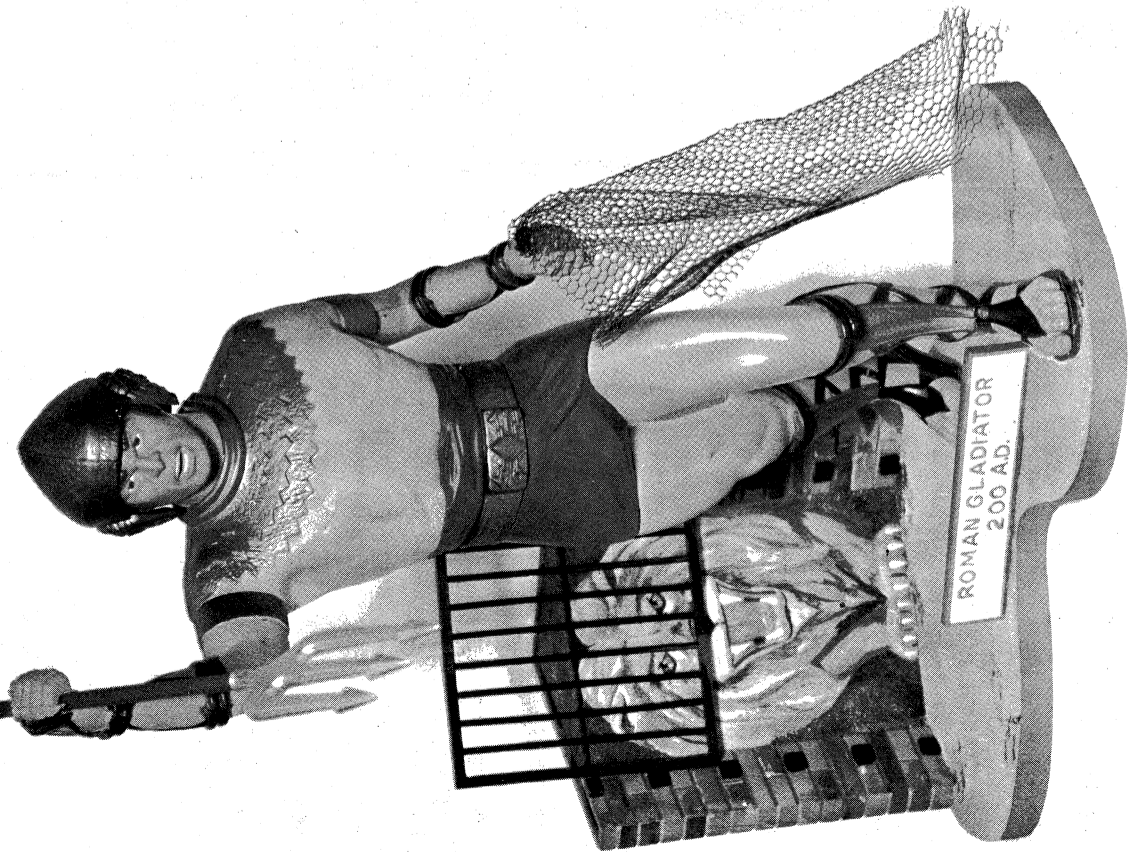
ADDRESS

CITY

STATE

CONTENTS: MERCHANDISE—Postmaster: This parcel may be opened for postal inspection. Return postage guaranteed.

Curt Along Line



"THE ENAMEL WITH THE SPRAYED LOOK"

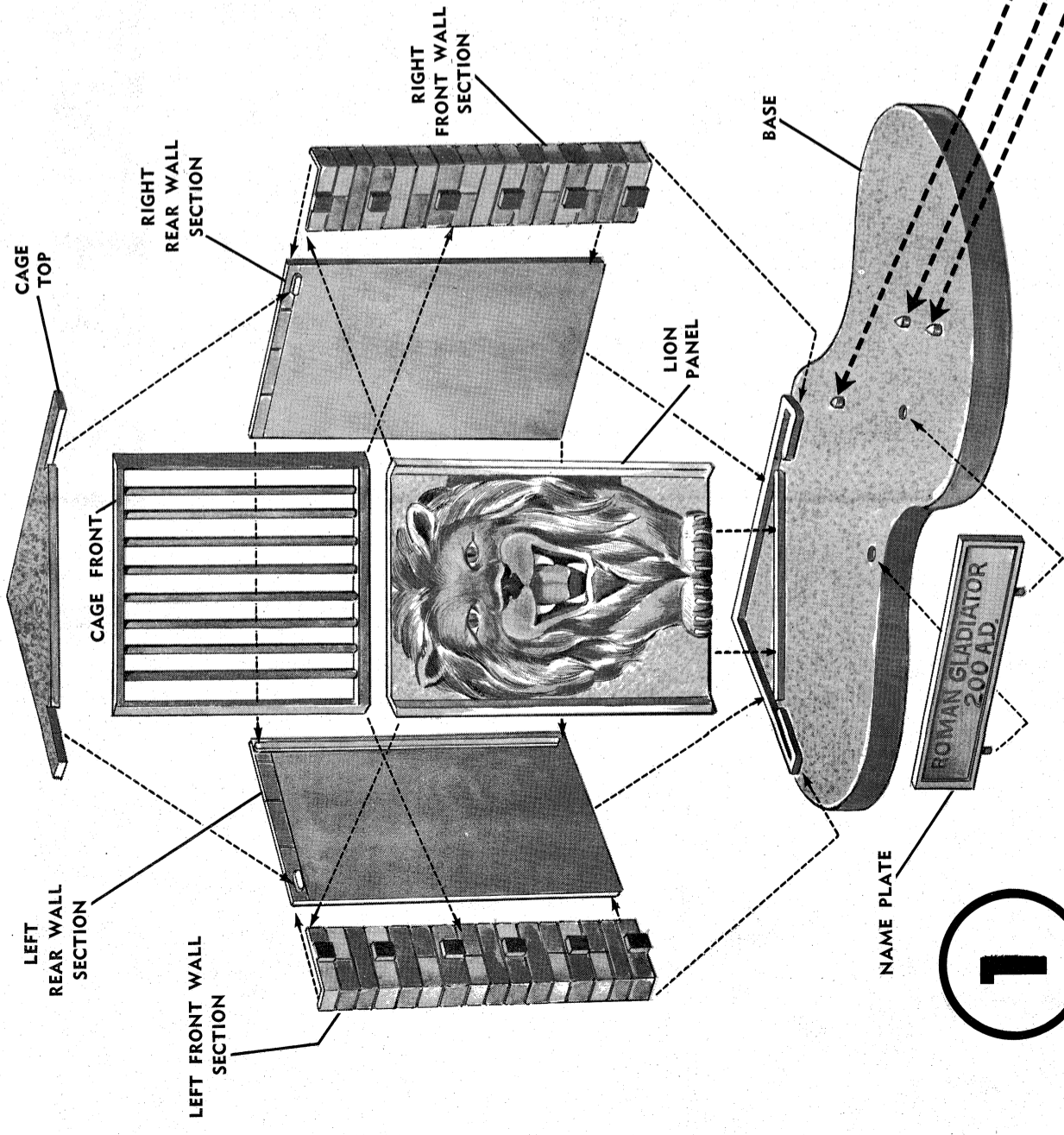


SPEED-DRY ENAMELS ARE AURORA'S REVOLUTIONARY NEW ENAMEL PAINTS. DEVELOPED AFTER YEARS OF RESEARCH ESPECIALLY FOR PLASTIC MODELS AND OTHER PRODUCTS OF WOOD, METAL, GLASS OR CHINA.

ROMAN GLADIATOR

FOR SUGGESTED DETAIL PAINTING SCHEME - SEE ILLUSTRATIONS. Paint parts as indicated and allow to dry before assembling.

For best results, use only AURORA'S SPEED-DRY ENAMEL - ONE COAT COVERS - DRIES IN 30 MINUTES - NO BRUSH MARKS.

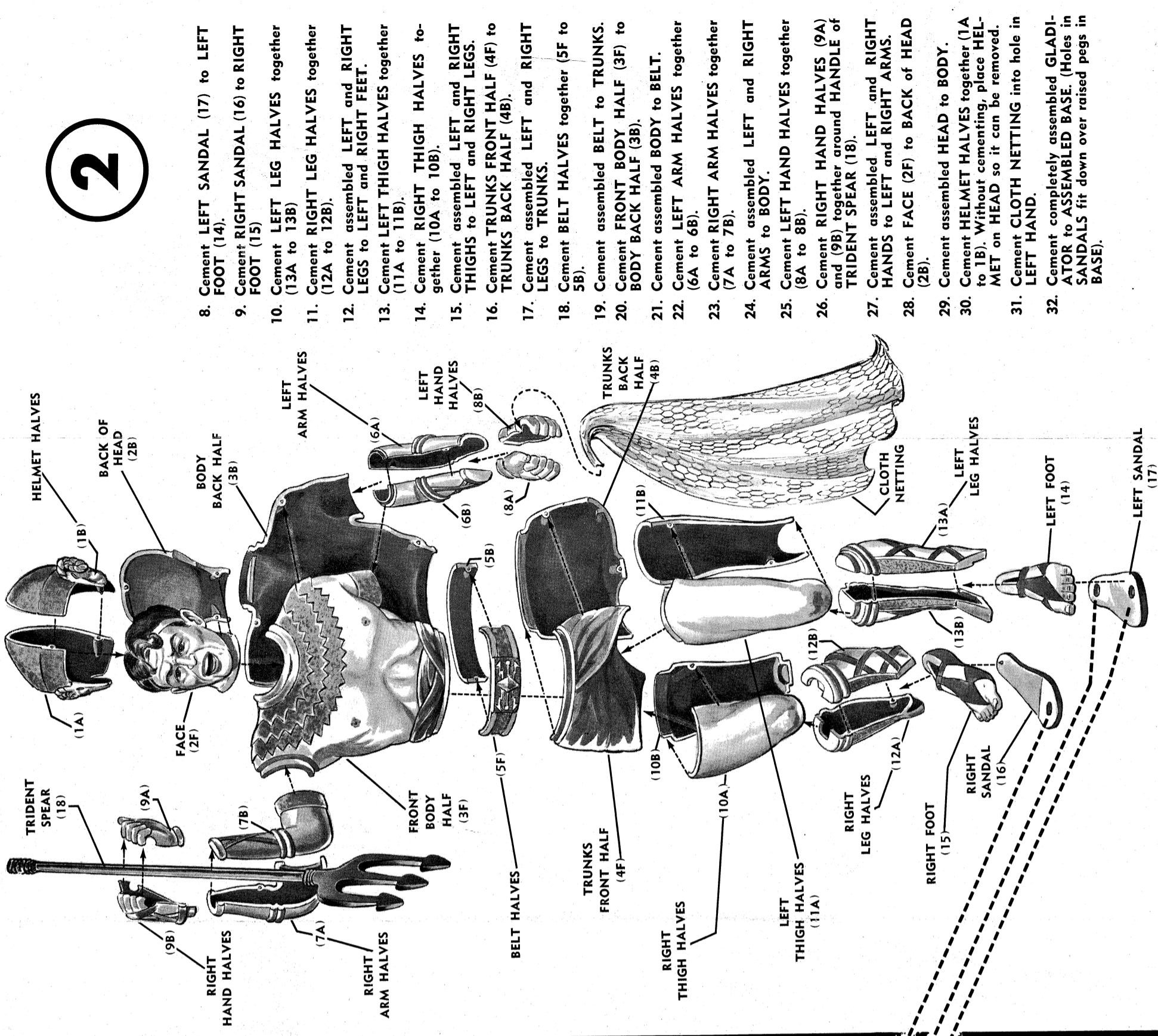


1. Cement edge of RIGHT REAR WALL SECTION to LEFT REAR WALL SECTION. Then cement bottom edges of assembled REAR WALL SECTION to BASE.
2. Cement LEFT FRONT WALL SECTION to front edge of LEFT REAR WALL SECTION and around raised strip on BASE.
3. Cement RIGHT FRONT WALL SECTION to front edge of RIGHT REAR WALL SECTION and around raised strip on BASE.

4. Cement LION PANEL against diagonal raised strip on BASE and to LEFT and RIGHT FRONT WALL SECTIONS.
5. Cement CAGE TOP down onto tabs on inside of REAR WALL SECTIONS and across top edge of LION PANEL.
6. Cement CAGE FRONT to LEFT and RIGHT FRONT WALL SECTIONS. (See PHOTO ILLUSTRATION for position).
7. Cement NAME PLATE to BASE.

1

2



8. Cement LEFT SANDAL (17) to LEFT FOOT (14).
9. Cement RIGHT SANDAL (16) to RIGHT FOOT (15)
10. Cement LEFT LEG HALVES together (13A to 13B)
11. Cement RIGHT LEG HALVES together (12A to 12B).
12. Cement assembled LEFT and RIGHT LEGS to LEFT and RIGHT FEET.
13. Cement LEFT THIGH HALVES together (11A to 11B).
14. Cement RIGHT THIGH HALVES together (10A to 10B).
15. Cement assembled LEFT and RIGHT THIGHS to LEFT and RIGHT LEGS.
16. Cement TRUNKS FRONT HALF (4F) to TRUNKS BACK HALF (4B).
17. Cement assembled LEFT and RIGHT LEGS to TRUNKS.
18. Cement BELT HALVES together (5F to 5B).
19. Cement assembled BELT to TRUNKS.
20. Cement FRONT BODY HALF (3F) to BODY BACK HALF (3B).
21. Cement assembled BODY to BELT.
22. Cement LEFT ARM HALVES together (6A to 6B).
23. Cement RIGHT ARM HALVES together (7A to 7B).
24. Cement assembled LEFT and RIGHT ARMS to BODY.
25. Cement LEFT HAND HALVES together (8A to 8B).
26. Cement RIGHT HAND HALVES (9A) and (9B) together around HANDLE of TRIDENT SPEAR (18).
27. Cement assembled LEFT and RIGHT HANDS to LEFT and RIGHT ARMS.
28. Cement FACE (2F) to BACK of HEAD (2B).
29. Cement assembled HEAD to BODY.
30. Cement HELMET HALVES together (1A to 1B). Without cementing, place HELMET on HEAD so it can be removed.
31. Cement CLOTH NETTING into hole in LEFT HAND.
32. Cement completely assembled GLADIATOR to ASSEMBLED BASE. (Holes in SANDALS fit down over raised pegs in BASE).