

JOHNNY JUNITAS

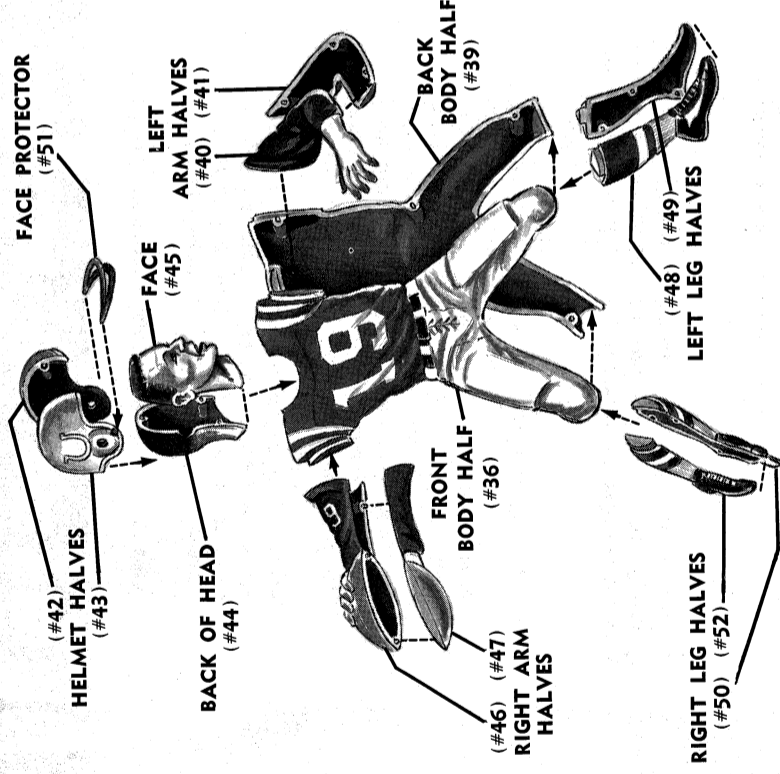
FOR SUGGESTED DETAIL PAINTING SCHEME — SEE ILLUSTRATIONS. Paint parts as indicated and allow to dry before assembling.

For best results, use only AURORA'S SPEED-DRY ENAMEL — ONE COAT COVERS — DRIES IN 30 MINUTES — NO BRUSH MARKS.

1

ASSEMBLING JOHNNY UNITAS

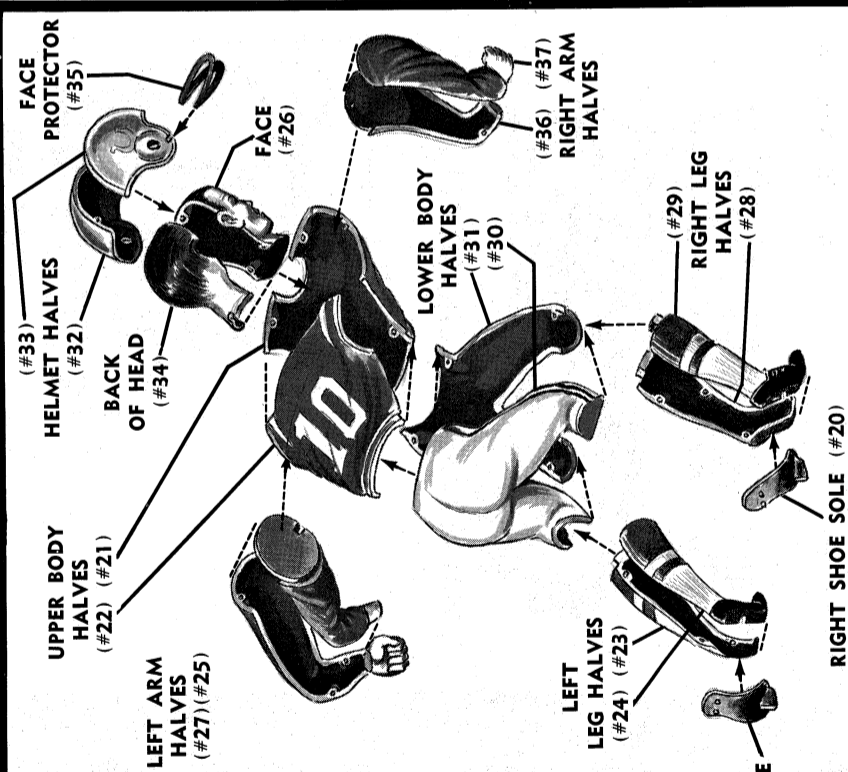
1. Cement FRONT BODY HALF (#36) to BACK BODY HALF (#39).
2. Cement RIGHT LEGS HALVES (#50) and LEFT LEG HALVES (#48) together. Then cement assembled LEGS to BODY.
3. Cement RIGHT ARM HALVES (#46) and LEFT ARM HALVES (#40) together. Then cement assembled ARMS to BODY.
4. Cement FACE (#45) to BACK OF HEAD (#44). Then cement assembled HEAD to BODY.
5. Cement HELMET HALVES (#42) together and slip assembled HELMET down over head.
6. Cement FACE PROTECTOR (#51) to HELMET.



2

ASSEMBLING BLOCKING TEAMMATE

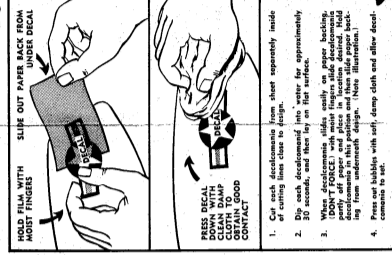
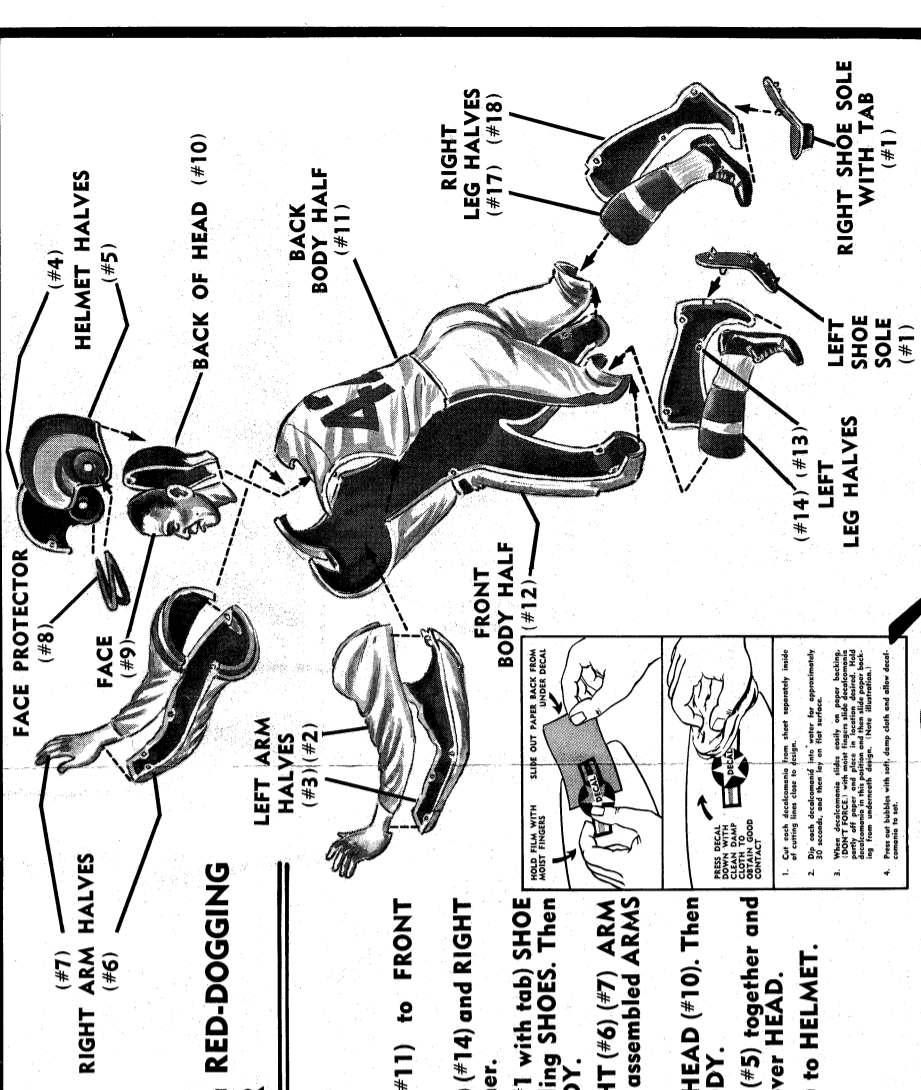
7. Cement UPPER BODY HALVES (#21) and LOWER BODY HALVES (#30) together. Then cement assembled UPPER and LOWER BODY HALVES together.
8. Cement LEFT LEG HALVES (#23) and RIGHT LEG HALVES (#24) together.
9. Cement LEFT (#19) and RIGHT (#20) SHOE SOLES to bottoms of corresponding SHOES. Then cement assembled LEGS to BODY.
10. Cement LEFT (#25) and RIGHT (#26) ARM HALVES together. Then cement assembled ARMS to BODY.
11. Cement FACE (#26) to BACK OF HEAD (#34). Then cement assembled HEAD to BODY.
12. Cement HELMET HALVES (#32) together and slip assembled HELMET down over HEAD.
13. Cement FACE PROTECTOR (#35) to HELMET.



3

ASSEMBLING RED-DOGGING LINEBACKER

14. Cement BACK BODY HALF (#11) to FRONT BODY HALF (#12).
15. Cement LEFT LEG HALVES (#13) and RIGHT LEG HALVES (#14) together.
16. Cement LEFT (#1) and RIGHT (#1) SHOE SOLES to bottoms of corresponding SHOES. Then cement assembled LEGS to BODY.
17. Cement LEFT (#2) and RIGHT (#2) ARM HALVES together. Then cement assembled ARMS to BODY.
18. Cement FACE (#9) to BACK OF HEAD (#10). Then cement assembled HEAD to BODY.
19. Cement HELMET HALVES (#4) together and slip assembled HELMET down over HEAD.
20. Cement FACE PROTECTOR (#8) to HELMET.

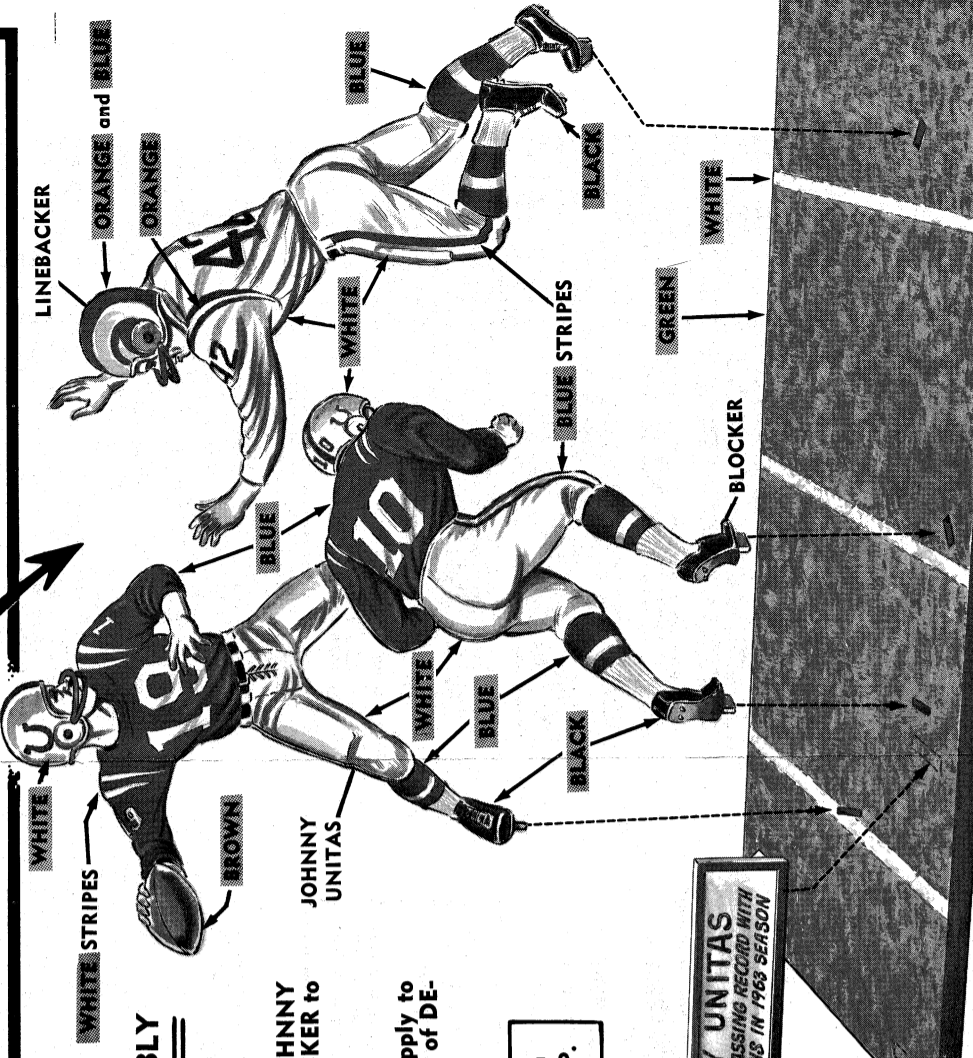


1. Each illustration shows approximately where to apply the glue.
2. Dip each decal in water for approximately 30 seconds, and then lay on the surface.
3. "BODY PROTECTORS" with white stripes will automatically apply and align the stripes on their own. They will not apply to "BODY PROTECTORS" with blue stripes. They will not apply to "BODY PROTECTORS" with orange stripes.
4. Cement the helmet and other parts.

4

FINAL ASSEMBLY

21. Cement completely assembled JOHNNY UNITAS, BLOCKER, and LINEBACKER to FIELD SECTION BASE.
22. Cement NAME PANEL to BASE.
23. Cut out DECAL sections and apply to FIGURES. Read directions on back of DECALS before applying.



FOR ADDITIONAL COLORING SUGGESTIONS SEE BOX WRAP.

NAME PANEL FRAME AND LETTERING
JOHNNY UNITAS
BREAKS NFL PASSING RECORD WITH 287 COMPLETIONS IN 1963 SEASON

FIELD SECTION BASE